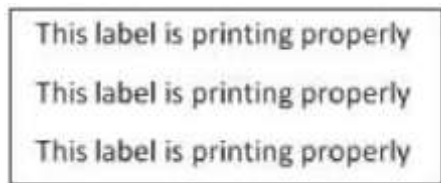
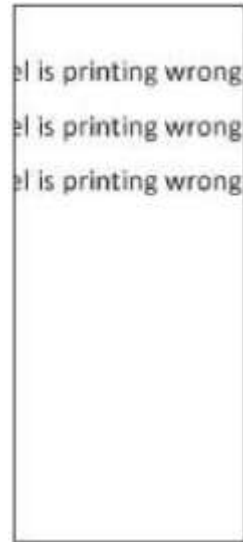


Question: How do I correct the orientation of a label?
How do I fix “blank” labels between printed labels.



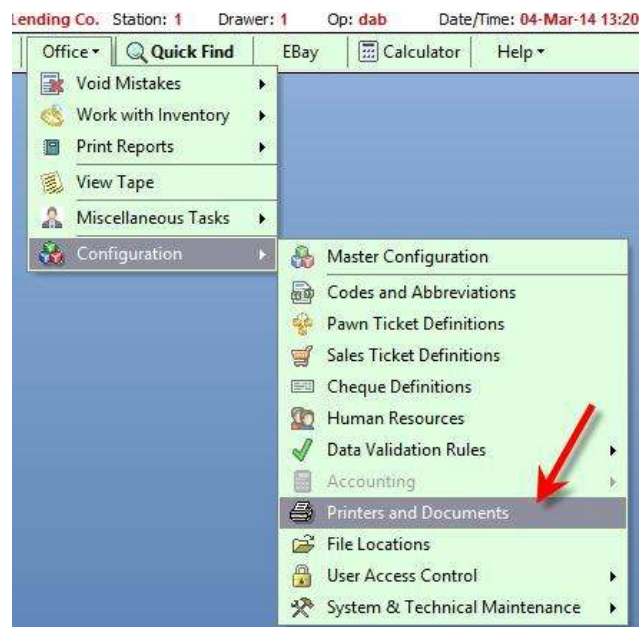
RIGHT



WRONG

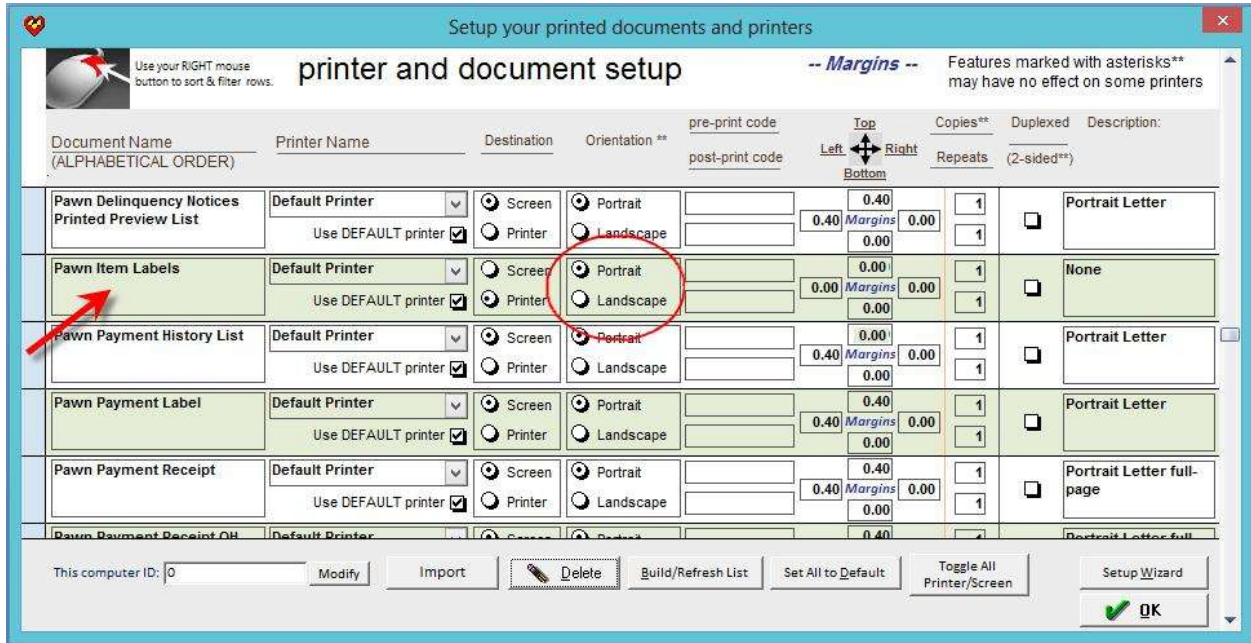
Answer: The orientation of a label and whether it is printed landscape or portrait can be changed.

Click on **Office** -> **Configuration** -> **Printers and Documents**.



Look down the left hand column for “Pawn Item Labels” (Hint: they are in alphabetical order).

The 4th column will let you switch between portrait and landscape.



If this does not work or does not have the desired effect, you will have to change the PRINTER DRIVER for your label printer.

- In Windows, click CONTROL PANEL, then PRINTERS.
- Look for the icon for your label printer.
- Right-click on it and choose PRINT PREFERENCES. If you don't see that option then choose PROPERTIES.
- When you see the print driver screen, look for the SIZE settings, HEIGHT and WIDTH. Normally the HEIGHT will be 1" and the WIDTH will be 3". EDIT these two settings to REVERSE them, so the height become 3" and the width becomes 1"
- Close the print driver and the control panel.

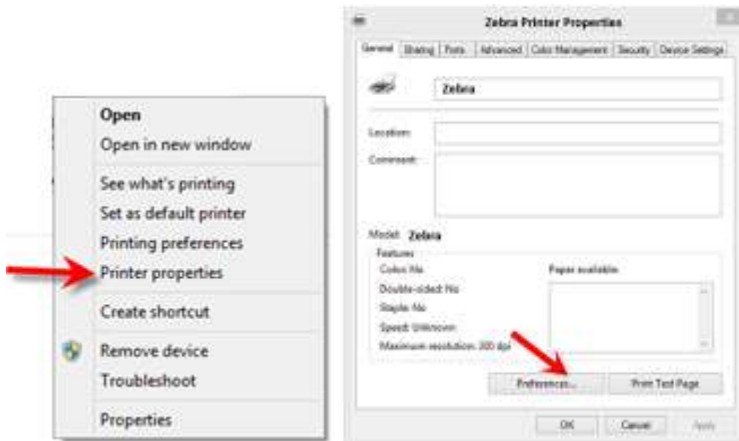
IF YOUR LABELS DO NOT SPACE PROPERLY, OR IF A BLANK LABEL APPEARS AFTER EACH PRINTED LABEL ...

For Windows 7:

Click the **START** button, -> then **Devices and Printers**



Find the Zebra label printer among the printer icons, and right click on the Zebra icon. When the menu appears click on Printer Properties.



Click on "**Preferences**," and then the printer preferences dialog will open. Set the label to 1" x 3" This is the correct height and width of the pawn label. New printers normally default to 2" x 3" and this must be changed or your printer will "skip" every other label, leaving a blank between labels.

Close the "preferences" dialog, but do not exit completely from the "Printer Properties"

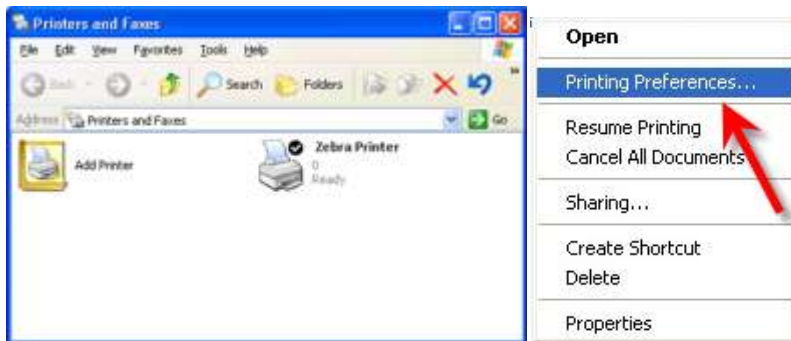
Now click on the "**Advanced**" tab at the top. Then click on "**Printer Defaults**." You will see another Height and Width setting and this also must be set to 1" x 3". Click OK when done.

For Windows XP

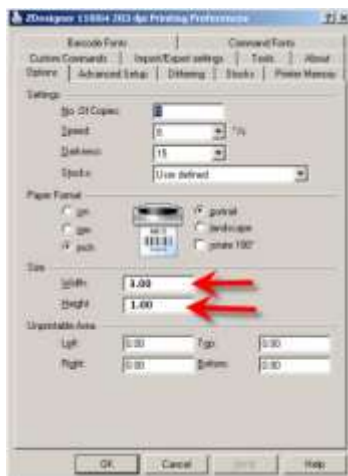
If you have Windows XP click on start and then Printers and Faxes.



The printers and faxes window will open. Find the label printer in the list and right click on the printer. A menu will open. Select “**properties.**”



Select “**printing preferences**” and you will see a Height and Width setting.



Set the **width** of the label to 3.00”

Set the **height** of the label to 1.00”

Next click on the **Advanced Setup** tab.
If not already selected, click on **Thermal Direct**.



